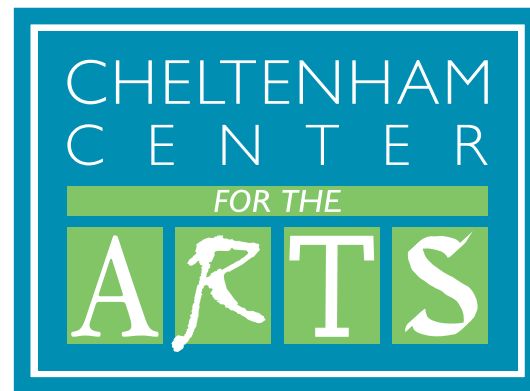




FOUR 8-WEEK SESSIONS FALL: SEPT 16-NOV 9 WINTER: NOV 25-FEB 1 SPRING 1: FEB 10-APR 4 SPRING 2: APR 20-JUNE 15

2019
2020



C L A S S E S & W O R K S H O P S



Cheltenham Center for the Arts
439 Ashbourne Road
Cheltenham, PA 19012
215-379-4660
www.cheltenhamarts.org

The Center is located 1.5 miles from the Northeast Philadelphia border. We are accessible by Public Transportation: SEPTA Route 70 bus stops at our door and the SEPTA Regional Rail (Fox Chase Line) stops at the nearby Cheltenham Station.

For more information about the Center and our instructors, visit our website at www.cheltenhamarts.org.

Sign up for our weekly e-newsletter at info@cheltenhamarts.org

Follow the Center on:



The Cheltenham Center for the Arts receives arts funding support through grants from the Pennsylvania Council on the Arts, a state agency funded by the Commonwealth of Pennsylvania. The Cheltenham Center for the Arts accepts all students regardless of race, religion, nationality, gender, sexual orientation or gender identity.

BECOME A MEMBER

Support The Cheltenham Center for the Arts, a not for profit 501(c) 3, by becoming a member! Members receive a number of privileges, including class discounts and participation in our Annual Members' Show.

DONATE!

The Cheltenham Center for the Arts relies on the support of its members, businesses, foundations and governmental partners to meet its mission to provide inspiring programming and exhibits. For 79 years the Center has maintained the goal of building a supportive community "for people to work together and talk together about art."

Please consider making a contribution to our Annual Fund. In order for us to grow and thrive, your support is critical. Your tax deductible contribution or planned gift will help build programs and services for our community.

WHAT'S HAPPENING AT THE CENTER?

Space Rentals—We proudly rent our gallery spaces for special events, our theater for performances, and make our studios available to collaborative arts organizations. For more information please contact info@cheltenhamarts.org.

Art Parties—Tired of the same old birthday parties or looking for a unique night out with friends? Treat your child (or yourself) to an art party! Guests will enjoy a fun-filled celebration featuring the visual or performing arts of their choice. You bring the cake and refreshments, we supply the fun! Appropriate for ages 5 to Adult. Call for details: 215-379-4660 or email info@cheltenhamarts.org.

Guilds and Affiliates—The Cheltenham Center for the Arts is proud to welcome a community of professional artists to the Center through its affiliation with:

- The Cheltenham Clay Guild: www.clayguild.com
- The Cheltenham Printmakers Guild: www.printmakersguild.com
- MamaCITA: mamacitaarts.com

For information about membership in these organizations, please visit their websites directly or call the Center at 215-379-4660.



VISIT OUR SHOP!

Located in the center of Elkins Park, the Cheltenham Center for the Arts Gallery Shop showcases local artists, and features ceramics, prints, jewelry and more. Find the perfect gift here!

The Cheltenham Center for the Arts Gallery Shop

7900 High School Road, Elkins Park, PA, 19027

shop@cheltenhamarts.org

Hours: Tues, Wed, Fri 12–5pm,
Thurs 12–7pm, Sat 10am–4pm

VISIT THE SHOP ON

CERAMICS

BEGINNING SKILLS FOR POTTERS

Instructor: Angie Humes

Tuesdays, 6:30-9:30pm

Tuition: \$265 (Members: \$250)

This class teaches the basics of wheel throwing, as well as creating the basic cylinder and bowl forms. This class will concentrate on weekly projects designed by the instructor. The first half will focus on basic techniques of centering and throwing for beginners. Later, there will be demonstrations in thrown and altered combining techniques, as well as decorative glaze techniques to enhance your surfaces. No experience necessary.



Angie Humes

BEGINNERS AND BEYOND FOR POTTERS

Instructor: Angie Humes

Friday, 10am-1pm OR

Saturday, 10am-1pm

Tuition: \$265 (Members: \$250)

Additional hour from 1-2pm: \$55

This class teaches the basics of wheel throwing and introduces textures like mishima, underglaze painting and the use of stains. Learn how to develop a body of work through demos, one on one instruction and guidance from the instructor. Demonstrations will focus on trimming, surface and glazing techniques.

START AT THE BEGINNING: HANDBUILDING

Instructor: TBD

Thursdays, 6-9pm

Tuition: \$265 (Members: \$250)

Beginner/Intermediate Handbuilding. Class will cover and review Hand Building Skills—Pinch, Coil and Slab. Demonstration for each project assigned. Each student is encouraged to create an original project upon approval. Materials list available upon registration. Class limited to 8 students.

**CLAY MUST BE PURCHASED DURING
OFFICE HOURS OR FROM INSTRUCTORS
DURING CLASSES, \$25 PER BAG,
PAYABLE BY CASH OR CHECK.**



ADVANCED SKILLS IN CLAY

Instructor: Ellen Pine Litwin

Thursdays, 10am-1pm

Thursdays, 7-10pm

Tuition: \$265 (Members: \$250)

Improve your skills by learning the “Details of Craftsmanship” that make your work more personal and finished. We will focus on throwing and handbuilding skills. A variety of lids, handles and spouts will be demonstrated, along with exercises designed to improve technique. Advanced students will have the opportunity to set individual goals with the help of the instructor. Learning about the glazing and firing process is included.

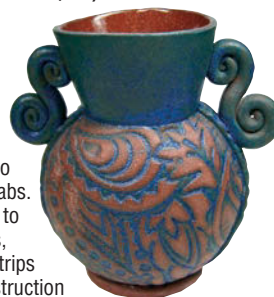
CREATING CLAY FORMS IN EARTHENWARE

Instructor: Barbara Hanselman

Tuesdays, 10am-1pm

Tuition: \$265 (Members: \$250)

This adventure starts out by exploring basic pinch, coil and pinch-strip constructions then moves onto building with slabs. We'll learn how to form CUTE-sies, use the pinch-strips method of construction to form vases & bowls then use templates to construct cups, boxes and foam-pressed trays. By creating our own patterns and textures on the clay surface, it's a breeze to build pieces which are truly our own. Colorful surface enhancements using engobes, terra sigillata, under glazes and specialty low fire glazes are also an integral part of this experience.



CLAY OPEN STUDIO

**is available to all currently enrolled clay students.
\$10 per day or \$65 for 8 days (paid in advance).**

**Tuesdays and Thursdays, 1-4pm
Sundays, 12:30-3:30pm**

PAINTING, DRAWING & PRINTMAKING

DRAWINGS INTO PAINTINGS**Instructor:** John Sevcik**Mondays, 1-4pm****Tuition:** \$240 (Members: \$225)

Use drawing as your research for paintings. Drawing has always been important to artists and constitutes a majority of many painters' work. This course helps you record your observations and use drawings from your personal sketchbook, imagination and memory to create the plan for a thought-provoking painting. The painted sketch will be an intermediate step to the larger painting. Demonstrations will assist you in understanding the method and encouragement will be provided. Realist, expressionist, abstract and minimalist painters are all welcome.

**PAINTING: A CREATIVE APPROACH****Instructor:** Stephen Kennedy**Tuesdays, 9am-1pm****Tuition:** \$265 (Members: \$250)

This class includes demonstrations and instruction in composition, color theory and painting techniques using oil, acrylic and charcoal. Personal growth and expression are emphasized in critiques. Please bring a 2B pencil and an 18"x24" newsprint pad. All levels welcome.

**ADVENTURES IN CREATIVE EXPRESSION****Instructor:** John Slivjak**Tuesdays, 6-9pm****Tuition:** \$240 (Members: \$225)

The goal of this class is to help students develop problem-solving skills as they relate to making art. What subject will you choose? What makes a strong composition? Which medium are you interested in mastering? Explore ideas of movement/gesture, abstract shape, light and the structural organization of the figure/still life. Initially, we will work in the traditional drawing mediums of charcoal or pencil. As we progress, students will have the option of working in the drawing or painting medium of their choice. All levels welcome.

FIGURE DRAWING OPEN STUDIO**Instructor:** Monitor**Saturdays, 10am-1pm****Tuition:** \$12 drop in fee

This is an opportunity to work from a nude model and improve your drawing skills. Each session will start with 2-3 minute poses and extend to 20 minutes. This is a monitored class but instruction will be available upon request.

LANDSCAPE AND PORTRAIT PAINTING**Instructor:** Stephen Kennedy**Wednesdays, 6:30-9:30pm****Tuition:** \$280 (Members: \$265) Model fee included

During the first four weeks of this class, we will explore the basics of landscape painting using photo references and laptops or iPads. The last four weeks of this class will focus on portrait painting from a live model. This class will include demonstrations and the emphasis will be on color, draftsmanship and composition.

**INDEPENDENT STUDY IN PAINTING AND DRAWING****Instructor:** Lynne Campbell**Thursdays, 10am-3pm****Tuition:** \$280 (Members: \$265)**Thursdays, 10am-1pm****Tuition:** \$240 (Members: \$225)**Thursdays, 12-3pm****Tuition:** \$240 (Members: \$225)

This class provides an opportunity for artists of intermediate and advanced levels to refine and strengthen their creativity in a relaxed and supportive studio setting. Receive individual guidance or work independently in any medium. Pursue your own original subjects and projects, or choose to work from a still life arrangement. A model will occasionally be provided on a TBA basis. Artists are to bring their own materials and supplies.

WATERCOLOR

Instructor: Roberta Schlesinger

Thursday, 6:30-8:30pm

Tuition: \$215 (Members \$200)

You may have tried watercolor in the past—or avoided trying it? But teacher Robby Schlesinger guarantees that you will love this class. Learn to control the water, build up color while retaining the highlight/luminosity, keep the paint where you want it, avoid muddy colors and fix mistakes (yes, it's possible!). Learn washes, scumbling, sponging, dropping-in, pointillism, sgraffito and more. This is a great class for everyone who wants to paint. It's also a great class for calligraphers and crafters who will learn easy techniques for painting watercolor backgrounds in your work.

Roberta Schlesinger



PAPER INTO PRINT

Instructor: Rona Richter

Wednesdays, 11:30am-3:30pm

Tuition: \$265 (Members: \$250) \$20 fee for use of some materials provided by the instructor

Focus on a new approach to printmaking with an emphasis on how various papers can enhance the process. We'll cover a wide range of monprint and monotype techniques, including reductive, multi-plate and gum transfer printing. Collographs, linocuts and woodcuts will also be explored. Learn how to use paper as a substrate, in Chine-collé and as a collage medium using techniques based on the Korean art of Joomchi. The use of unique papers will expand your visual vocabulary. Instruction will be based on each student's interest and experience. The instructor is a hand papermaker as well as a printmaker.



NON-TOXIC PRINTMAKING

Instructor: Katie Van Vliet/Doah Lee

Thursdays, 12:30-4:30pm

Tuition: \$265 (Members: \$250)

This class includes demonstrations, critiques and instruction in a variety of printmaking media: collographs, monoprints, monotypes, silkscreen, dry point etching, linocuts and woodcuts. All media explored in this class will use water-based inks. All levels welcome. Please bring Speedball water-based block printing ink in six basic colors for first class. Further materials list provided in class.



PRINTMAKING OPEN STUDIO

One Sunday per month, 1-4pm. Call for dates.

Sessions will be monitored.

**\$10 drop in fee for Non-Print Guild Members
Open to all. Non-toxic materials only please!**

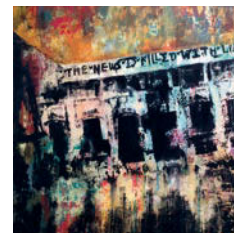
MULTI-LAYERED PRINTMAKING

Instructor: Nicole Patrice Dul

Tuesdays, 6:30-9:30pm

Tuition: \$240 (Members \$225)

Create richly layered prints by combining traditional and contemporary relief, intaglio, planographic and stencil printmaking techniques. Integrate and experiment with a variety of non-toxic processes. Possibilities include: woodcut/linocut, drypoint, etching, screen print, pochoir, monotype, polyester/paper plate lithography, silk aquatint, photo transfer and rust printing. Build complexity in your prints through layering and collaging. Explore the technical and expressive possibilities of multi-layered printmaking. All levels welcome.





IN THE HEART OF DOWNTOWN ELKINS PARK, within the historic Elkins Park Train Station, sits CCA at Elkins Central. Hosting a wide variety of intimate concerts, classes and other community events throughout the year, CCA at Elkins Central has become a staple space for the arts in Elkins Park. Elkins Central is the perfect place to host your next gathering—the space may be rented for meetings, parties, and much more. CCA at Elkins Central offers our community an event place to gather, and a venue to highlight the arts and humanities. Visit the Cheltenham Center for the Arts at Elkins Central located at Elkins Park Train Station—7879 Spring Avenue, Elkins Park, PA, 19027.



To learn more about CCA at Elkins Central or to see a schedule of upcoming events, please visit our website at www.cheltenhamarts.org or visit the new CCA at Elkins Central Facebook page! www.facebook.com/elkinscentral



METALS & MORE

JEWELRY MAKING FOR BEGINNERS/BEYOND BEGINNERS

Instructor: Marthe Roberts-Shea
Mondays, 6:30-9:30pm
Tuition: \$265 (Members: \$250)

Students will learn the fundamentals of jewelry making through instructor demonstration and hands on practice. Sawing, piercing, riveting, filing, soldering and polishing are only a few of the skills that you will learn in this jam-packed class! At the first class students will be taught how to order their own supplies from several resources for the following weeks of class. No experience is needed.



Marthe Roberts-Shea

INTERMEDIATE/ADVANCED JEWELRY

Instructor: Marthe Roberts-Shea
Thursdays, 10am-1pm
Tuition: \$265 (Members: \$250)

Students will incorporate their basic metals skills by exploring several new jewelry making processes. If students are interested we are going to have a *4 Pairs of Earrings in 8 Weeks Challenge*. At the end of the semester students will come away with four very different pairs of earrings—just in time for holiday giving! Knowledge of sawing and soldering is very helpful.

VINYASA YOGA AT THE CENTER

Instructor: Maryann Sims
Tuesdays, 8-9am
\$10 drop in fee

Learn and practice calming the mind while developing strength, balance and increased flexibility in your body. Please bring a large towel or yoga mat to class and wear loose, comfortable clothing. All levels welcome.



October 2

PIANIST, SUMI TONOOKA

November 6

VOCALIST, PAUL JOST

December 4

GUITARIST, LARRY TAMANINI

January 8

BASSIST, NIMROD SPEAKS

February 5

VOCALIST, KELLY MEASHEY

March 4

VOCALIST, JEANNIE BROOKS

April 1

VOCALIST, M'BALIA SINGLEY

May 6

THE DIXIE KINGS

NIMROD SPEAKS



NOW IN ITS 11TH YEAR at the Cheltenham Center for the Arts, Jazz Bridge is a non-profit arts organization serving a need no one else is addressing in the Philadelphia area: responding to local jazz and blues artists in times of need. Proceeds from the neighborhood concert series go to help local jazz musicians in personal or professional crisis.

Concerts feature prominent jazz and blues musicians during an hour and a half long program which includes a Q&A with the artists and light refreshments. Check out our website to learn more about each performer.

**CONCERTS ARE
THE FIRST WEDNESDAY
OF EVERY MONTH,
OCTOBER TO MAY
7:30-9PM**

**TICKETS—\$10; STUDENTS \$5
FREE FOR CHILDREN UNDER 12 YEARS OLD!**

jazzbridge.org
cheltenhamarts.org

jazz bridge

BRIGHT INVENTION

THEATER CLASSES AT CHELTENHAM CENTER FOR THE ARTS

IMPROV 1

Instructor: Shea Sonsky

Eight Tuesdays, 7-9 pm, beginning October 1

Tuition: \$250

This 8 week class introduces you to Bright Invention's approach to improv. Level 1 is for anyone who wants to learn the basics of improvisation and gain foundational skills in the development of authentic improvised scene work, ensemble connection and the concept of "Yes, And!"



ACTING OUT!

Theatre for youth with disabilities.

Instructors: Kiersten Adams, Shea Sonsky

Eight Sundays, 2:30-4pm, beginning October 6th

Tuition: \$250

This class is open to all students with ASD/special needs. This class introduces basics of acting and improvisation in a safe and structured environment. Students will engage in an opening ritual at the beginning of each class and will gradually be introduced to games and activities over the course of the class semester. The final class will feature a share for family and friends based on the comfort level of students.

IMPROV 2

Instructor: Benjamin Lloyd

Eight Thursdays, 7-9 pm, beginning October 3rd

Tuition: \$250

This 8 week class is for anyone who has studied improv with Bright Invention before, or has previous improv experience. We will work towards creating an ensemble which will perform a show at the end of the class.

To register for any of these classes go to www.brightinvention.org

Questions about these classes? Call 215-690-5133, or email ben@brightinvention.org.

You may audit the first class at no charge.

www.cheltenhamarts.org 215-379-4660

FALL / WINTER WORKSHOPS

BEAUTIFUL RUST: PRINTING ON PAPER

Instructor: Nicole Patrice Dul
Sunday, November 3rd &
Sunday, November 10, 2019, 1-4pm
Tuition: \$120
\$20 Material fee paid to instructor

Discover the possibilities of printing on paper with found rusty objects. Make interesting impressions in earthy brown, gray and orange tones obtained from rust (iron oxide), the natural oxidation process of ferrous metals, exposed to acidic conditioning and atmospheric moisture. Students will learn direct contact printing with rusted items, create a small hand bound booklet of unique sample prints and a 16"x20" rust print. Tips on rusting metal, using rust as a pigment, and how to manipulate the print with other materials to push your work further will be given. Join this workshop and explore the creative possibilities for using rust printing in art. Feel free to bring personal rusted objects for use. All materials will be provided. No experience necessary.

**INTRODUCTION TO PLEIN AIR PAINTING**

Instructor: John Slivjak
Saturday, September 28, 10am-4pm
CCA at Elkins Central (Elkins Park Train Station)
Tuition: \$150

Join celebrated local artist John Slivjak for a painting class in High School Park. Learn strategies to prepare for, organize and get the most out of your Plein Air painting time. Learn about selecting the best easel types and equipment, choosing appropriate media for your day (pencil, charcoal, oil, pastel, etc.), setting specific goals for each outing, using the elements of composition and more. Class will meet at Elkins Central (7879 Spring Ave, Elkins Park), rain or shine, and walk over to High School Park (1.5 blocks away) for part of your painting.

CRITIQUE DAY

Moderator: Collen Hammond with invited guests
One Sunday per month September-December,
12-1:30pm, 9/22, 10/20, 11/17, 12/15
Tuition to Present: \$10 (CCA Members Only)
Registration required, limit 6 presenters per date
Tuition to Observe: Free to the Public

Want authentic artistic growth in your painting and drawing skills? Move beyond "That's nice!" Critique Day is a monthly opportunity for CCA members to present 1-2 pieces of work for constructive feedback in a small group setting. A cross section of invited artists and art professionals will help explore varied perspectives, examine technical and emotional components, and aid in seeing more objectively.

PEN AND INK PLUS WATERCOLOR

Instructor: Roberta Schlesinger
Sundays, 10/6, 10/13, 10/20, 12:30-2:30pm
Tuition: \$150

Working in pen and ink is some of the most fun you can have on paper! Master artist Robby Schlesinger will teach you all about the versatility of the pen. We'll work with pointed pen, micro-pen and brush pen exploring a variety of drawing styles to find the one that suits your artistic impulses. Pen and ink techniques are perfect for sketchbook work, realistic and abstract paintings, even canvas and fabric art. Students will learn to add watercolor washes to their pen and ink drawings to make art that pops in any style.

ABSTRACT LANDSCAPES

Instructor: Rebecca Schultz
Saturday, October 5, 12:30-4:30pm
Tuition: \$120 Materials included

Join Artist in Residence Rebecca Schultz for this unique day of painting! Participants will be guided through the process of making an abstracted landscape painting starting with an observational sketch, then a color study and finally an acrylic painting. Each participant will utilize line, form, color, structure and their personal mark-making style to develop a piece reflecting their unique view of the world.



**CHECK OUR WEBSITE FOR ADDITIONAL WORKSHOPS
 THROUGHOUT THE YEAR—WE ARE ALWAYS ADDING MORE.**

If you have an idea for a workshop, contact CCA at info@cheltenhamarts.org

FOR KIDS 12 AND UNDER

ANIMAL ART

Instructor: Roberta Schlesinger

Ages 5-8

Saturdays, 9:15-10:30am

Tuition: \$135 (Members \$120)

Lions and tigers and bears, oh my!

And of course, puppies, kittens and bunnies! Students will receive individual instruction and encouragement as they explore art through a variety of materials. Learn techniques in drawing, painting, collage and printmaking.

WILD THINGS

Instructor: Roberta Schlesinger

Ages 9-12

Saturdays, 10:30am-12pm

Tuition: \$135 (Members: \$120)

Children will learn cartooning, sketching and classical drawing techniques, and experiment with colored pencil drawing, painting, collage, and bas relief in a fun, nurturing environment. They will explore a variety of art materials to create all sorts of animals. This fun class inspires creativity, imagination and problem solving.



CLAY FOR KIDS

Instructor: Ellen Pine Litwin

Ages 5-8

Saturdays, 9-10:15am

Ages 9-12

Saturdays, 10:30am-12pm

Tuition: \$135 (Members: \$120)

In this class, children will be encouraged to develop their creative skills by learning the basics of working with clay. Students will produce decorative and functional pottery as well as sculpture. Older children will have the opportunity to try the potter's wheel.



AFTER-SCHOOL CLAY

Instructor: Catherine Gacki-Hartt

Ages 5-8

Wednesdays, 4:30-6pm

Ages 9-12

Wednesdays, 6:30-8pm

Tuition: \$135 (Members: \$120)

In this class, children will learn the fundamentals of handbuilding while exploring their creativity through a variety of functional and sculptural projects. Older ages will learn to use the potter's wheel. No experience necessary. All materials and tools provided.



**TEENS AGE 15+ MAY ALSO REGISTER
FOR SELECTED ADULT CLASSES.**

FOR TEENS

TEEN CLAY—WORKING IN MULTIPLES

Instructor: Ellen Pine Litwin

Ages 13+

Saturdays, 12:30-2:30pm

Tuition: \$150 (Members: \$135)

Students will learn the basics of the potter's wheel and hand building to create sets of mugs, bowls and/or plates. Various glazing and decorating techniques will be offered to help each participant to create a body of work that will reflect their own individual vision. Previous experience is welcome but not required.

WHEEL THROWING FOR TEENS

Instructor: Catherine Gacki-Hartt

Ages 12+

Mondays, 6:30-8:30pm

Tuition: \$150 (Members: \$135)

This class teaches the basics of wheel throwing to form cylinders, bowls and vases using the potter's wheel. We will explore decorative glaze techniques to enhance finished surfaces. Beginners welcome, no experience necessary.

TEEN PAINTING AND DRAWING INTERMEDIATE/ADVANCED

Ages 13+

Wednesdays, 6:30-8:30pm

Tuition: \$150 (Members: \$135)

This class is an opportunity to develop the style and look of your work through constructive criticism and editing. Most importantly, this class provides students with time, space and guidance in an atmosphere that is not only thoughtful and serious, but also supportive and fun.



JEWELRY MAKING FOR TEENS

Instructor: Marthe Roberts-Shea

Ages 12-15

Wednesdays, 6:30-8:30pm

Tuition: \$180 (Members: \$165) includes silver and other materials

Join us for a fun and creative class! Take the class solo or take the class with a friend. During this semester we'll start by making a riveted bangle bracelet. Then we will move on to a soldered, forged sterling silver band ring. If time permits you will learn how to make a bezel setting for a gemstone. Materials list available upon registration.

DRAWING: COMPOSITION & DESIGN

Ages 13+

Saturdays, 10:30am-12:30pm

Tuition: \$150 (Members: \$135)

Learn to see and think about your work using composition, shape, color, perspective and texture to express your unique personal vision. Explore interesting materials as you create large and small works of art. This workshop will explore drawing with various media including charcoal, colored pencil, ink and wash, and mixed media techniques. Students will have the opportunity to work on observational as well as imaginative projects.

youth classes

2019-2020 CORE CLASSES

	SUNDAY	MONDAY	TUESDAY	WEDNESDAY	THURSDAY	FRIDAY	SATURDAY
MORNING			VINYASA YOGA <i>8-9am</i> PAINTING: A CREATIVE APPROACH <i>9am-1pm</i> CREATING FORMS IN EARTHENWARE <i>10am-1pm</i>		ADVANCED SKILLS IN CLAY <i>10am-1pm</i> INTERMEDIATE/ADVANCED JEWELRY <i>10am-1pm</i> INDEPENDENT STUDY IN PAINTING & DRAWING (5 Hour) <i>10am-3pm</i> INDEPENDENT STUDY IN PAINTING & DRAWING (3 Hour) <i>10am-1pm</i>	BEGINNERS AND BEYOND FOR POTTERS: <i>10am-1pm</i>	CLAY FOR KIDS (Ages 5-8) <i>9-10:15am</i> ANIMAL ART (Ages 5-8) <i>9:15-10:30am</i> CLAY FOR KIDS (Ages 9-12) <i>10:30am-12pm</i> WILD THINGS (Ages 9-12) <i>10:30am-12pm</i> DRAWING: COMPOSITION & DESIGN <i>10:30am-12:30pm</i>
AFTERNOON	ACTING OUT <i>2:30-4pm</i>	DRAWINGS INTO PAINTINGS <i>1-4pm</i>		PAPER INTO PRINT <i>11:30am-3:30pm</i> AFTER-SCHOOL CLAY (Ages 5-8) <i>4:30-6pm</i>	INDEPENDENT STUDY IN PAINTING & DRAWING (3 Hour) <i>12-3pm</i> NON-TOXIC PRINTMAKING <i>12:30-4:30pm</i>		FIGURE DRAWING OPEN STUDIO <i>10am-1pm</i> BEGINNERS AND BEYOND: FOR POTTERS <i>10am-1pm</i> TEEN CLAY—WORKING IN MULTIPLES <i>12:30-2:30pm</i>
EVENING		JEWELRY MAKING FOR BEGINNERS/ BEYOND BEGINNERS <i>6:30-9:30pm</i> WHEEL THROWING FOR TEENS <i>6:30-8:30pm</i>	ADVENTURES IN CREATIVE EXPRESSION <i>6-9pm</i> BEGINNING SKILLS FOR POTTERS <i>6:30-9:30pm</i> MULTI-LAYERED PRINTMAKING <i>6:30-9:30pm</i> IMPROV 1 <i>7-9pm</i>	AFTER-SCHOOL CLAY (Ages 9-12) <i>6:30-8:30pm</i> JEWELRY MAKING FOR TEENS <i>6:30-8:30pm</i> TEEN PAINTING & DRAWING: INTERMEDIATE/ADVANCED <i>6:30-8:30pm</i> LANDSCAPE & PORTRAIT PAINTING <i>6:30-9:30pm</i>	START AT THE BEGINNING: HANDBUILDING <i>6-9pm</i> WATERCOLOR <i>6:30-8:30pm</i> IMPROV II <i>7-9pm</i> ADVANCED SKILLS IN CLAY <i>7-10pm</i>		OPEN STUDIOS CERAMICS OPEN STUDIOS: <i>Tuesdays, 1-4pm</i> <i>Thursdays, 1-4pm</i> <i>Sundays, 12:30-3:30pm</i> PRINTMAKING OPEN STUDIO: <i>One Sunday per month, 1-4pm</i> <i>Call for dates.</i> FIGURE DRAWING OPEN STUDIO: <i>Saturdays, 10am-1pm</i>

FALL: September 16–November 9, 2019
SPRING 1: February 10–April 4, 2020

WINTER: November 25, 2019–February 1, 2020
SPRING 2: April 20–June 15, 2020

CLASS #	CLASS NAME	SESSION	TUITION

Are you currently a member of CCA? ☐ Yes ☐ No
 If not, please consider joining now! Choose a level:

<input type="checkbox"/> Individual (\$45)	<input type="checkbox"/> Patron (\$250-\$499)	MEMBERSHIP:
<input type="checkbox"/> Family (\$75)	<input type="checkbox"/> Sponsor (\$500-\$999)	
<input type="checkbox"/> Supporter (\$100-\$249)	<input type="checkbox"/> Benefactor (\$1000+)	

I would like to donate to the CCA Annual Fund Drive!

<input type="checkbox"/> \$25	<input type="checkbox"/> \$50	<input type="checkbox"/> \$100	<input type="checkbox"/> \$250	DONATION:
<input type="checkbox"/> \$500	<input type="checkbox"/> \$1000	<input type="checkbox"/> Other _____		

TOTAL AMOUNT:

Refund and Pro-Rating Policy for Classes and Workshops: A \$15 processing fee will be charged for all refunds. Upon student withdrawal one week prior to the first class: full tuition refund minus processing fee. Up through second class: 75% refund minus processing fee. No refund will be given after the second class. Membership fees are non-refundable. CCA does not pro-rate any class due to late registration or missed classes. Exceptions to these policies will only be considered in cases of extremely extenuating circumstances with a written request to the Director. Upon registration, students give permission to the Center to publish student photographs in print or on the web for fund-raising and press purposes. Classes require a minimum of 5 students to run.

CLASSES & WORKSHOPS REGISTRATION FORM 2019-2020

Student Name _____

Parent's Name *(if registering a student under 18)* _____

Address _____

City/State/Zip _____

Home Phone _____ Work/Cell Phone _____

E-mail _____ Date _____

Please pay by check, if possible.

Payment Method: ☐ Check # _____ ☐ Cash ☐ Visa ☐ MasterCard ☐ Discover

Credit Card # _____ Exp. Date _____

CVC Code _____ Signature _____

Please return completed form to the address below or register online.

439 Ashbourne Road
Cheltenham, PA 19012
215-379-4660
www.cheltenhamarts.org



JAZZ BRIDGE CONCERT

First Wednesday of Every Month
From October to May, 7:30-9pm
(See schedule inside) Tickets required

BIENNIAL PRINTMAKING EXHIBITION: PRINT EXPLOSION

September 15–October 20, 2019
Opening Reception Sunday, Sept. 15, 2-4pm

ART PARTY 2019!

Saturday, November 2, 2019, 7-10pm
Tickets required

PHILADELPHIA STORIES: 15TH ANNIVERSARY SHOW

November 16–December 13, 2019
Tickets required

CHELTENHAM HOLIDAY SALE

December 7 & 8, 2019, 11am-4pm

CCA MEMBERS' SHOW

January 5-January 30, 2020
Opening and Annual Potluck Supper:
Sunday, January 5, 3-5pm



EXPLORING THE FIGURATIVE VESSEL

Sunday February 2–February 23, 2020
Opening Reception February 2, 2-4pm

FAMILY FUN DAY

Sunday, March 1, 2020, 12-4pm

10TH REGIONAL CHILDREN'S ART SHOW

March 1–March 21, 2020

77TH ANNUAL PAINTING SHOW

March 29–April 26, 2020
Opening Reception Sunday, March 29, 2-4pm

RESIDENT ARTISTS' EXHIBIT

May 3–June 2, 2020
Opening Reception Sunday, May 3, 2-4pm

2019-2020 EVENTS



Cheltenham Center for the Arts
439 Ashbourne Road
Cheltenham, PA 19012

Non-Profit Org.
US Postage
PAID
Permit No. 15
Jenkintown, PA

**SEE OUR WEBSITE FOR A FULL LISTING OF CONCERTS/CLASSES
AT ELKINS CENTRAL, OUR VENUE AT THE ELKINS PARK TRAIN STATION!**



REGISTER
NOW